



www.oldneighborhoodfoods.com

Product Code: 571



www.thinntrim.com

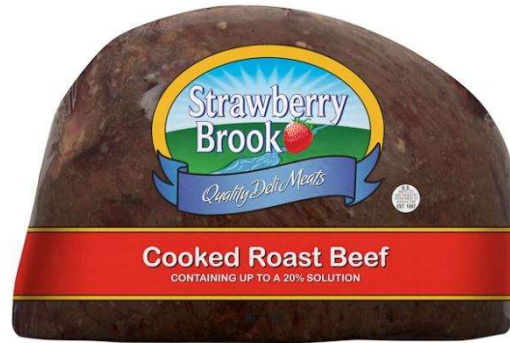
Strawberry Brook Cooked Roast Beef

Case: 2-9 lb average pieces/case
Case Code GTIN14: 90052294005714
UPC GTIN12: No UPC
Case Dimensions: 13.5"L x 7.25"H x 9"W (M30)
Case Cube: 880.88 cubic inches
TI HI: Block 12 Tier 8

Description: Made from 100% fresh domestic top rounds; completely denuded; cap removed; oven cooked; medium rare. One piece cut in half. Two half pieces per case

Ingredients: Beef, Water, Salt, Sodium Phosphate, Potassium Lactate, Hydrolyzed Soy Protein, Dextrose, Sodium Diacetate, and Flavorings in up to a 20% solution. Coated with: Dextrose, Salt, Caramel Color, Modified Food Starch, Flavorings, Corn Oil, Paprika.

Product Name:			
Cooked Roast Beef			
Nutrition Information			
Serving Size	2 oz (56 g)		
Servings Per Container	Varied		
Amount Per Serving			
Calories	70		
Calories From Fat	20		
		% Daily Value*	
Total Fat	2 g		3%
Saturated Fat	0.5 g		3%
Trans Fat	0 g		
Cholesterol	35 mg		12%
Sodium	340 mg		22%
Total Carbohydrate	1 g		<1%
Dietary Fiber	0 g		0%
Sugars	1 g		
Protein	12 g		
Vitamin A	0%	Vitamin C	0%
Calcium	0%	Iron	4%
*Percent Daily Values are based on a 2,000 calorie diet.			



NO MSG No Added Nitrites Gluten Free

Allergen	Ingredient	Used on same line	Used in plant
Milk	No	No	Yes
Wheat	No	No	No
Soy	No	Yes	Yes
Gluten	No	No	No
MSG	No	No	No
Added Nitrites	No	Yes	Yes
Chemical Preservatives	Yes	Yes	Yes

This facility is free of fish, shellfish, mollusk, peanuts, and tree nuts.